





**tor**  
PROPERTIES

Tor Properties is a leading real estate developer in Limassol, known for its distinct commercial and residential projects. Our designs are environmentally conscious and focus heavily on sustainability, building for a brighter future, with innovative solutions.

Midori is one of our premier residential offerings situated in the Neapolis district of Limassol. The project features homes crafted with an eye for quality and innovation. With standout architecture and upscale interiors, Midori merges modern living, with the unique character of the local surroundings.





# STRATEGICALLY POSITIONED

Tor Properties' developments are strategically located in prime areas with high demand, offering direct access to highways and convenient proximity to the city center and the seafront.

## INSPIRED LIVING

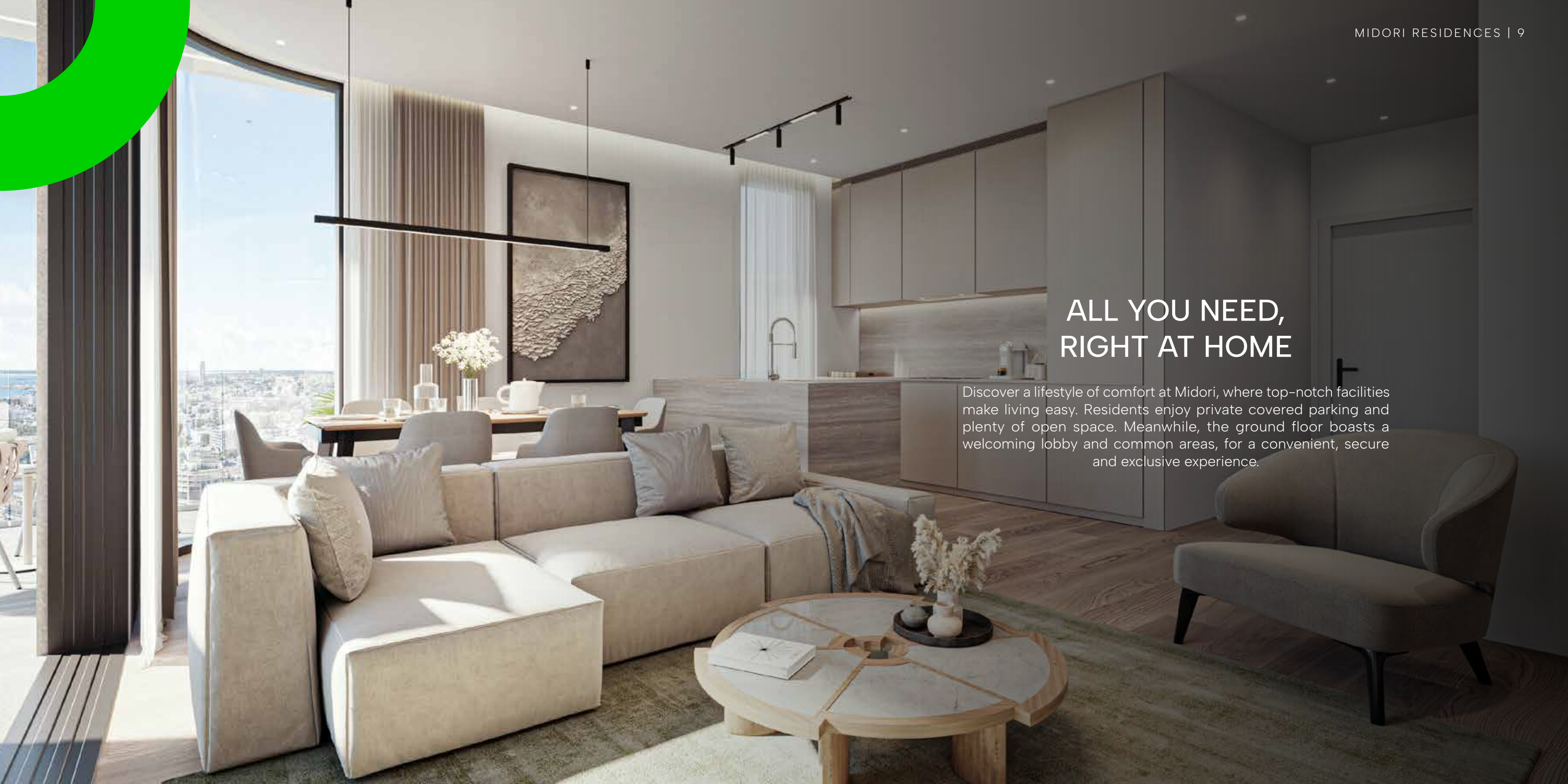
Welcome to Midori – upscale residences which elevate contemporary urban living in Limassol’s Neapolis district. With a prime location and standout design, the development merges chic coastal style with sustainable features. Enjoy a true Mediterranean lifestyle, where comfort meets quality across eight two-bedroom apartments.





## ALL YOU NEED, RIGHT AT HOME

Discover a lifestyle of comfort at Midori, where top-notch facilities make living easy. Residents enjoy private covered parking and plenty of open space. Meanwhile, the ground floor boasts a welcoming lobby and common areas, for a convenient, secure and exclusive experience.





## KEY FACTS

Midori offers eight residences across five floors. The two top-floor apartments feature private roof gardens, with infinity pools and sweeping sea views. Located in Neapolis, these homes are ideally positioned between the city centre and the seafront, ensuring easy access to all amenities.

Residents enjoy exclusive access to convenient facilities, and the building is constructed with highest energy efficiency and safety standards in mind.



## ELEVATED LIVING EXPERIENCES

Midori is a picture of modern design innovation and sustainability. Each residence features an open-plan layout, with south-facing windows that maximise natural light and air flow. High-quality materials, fittings and furnishings, along with advanced systems, deliver seamless comfort and style. From the spacious living areas to the thoughtfully-planned bedrooms, every detail is crafted with care, ensuring quality that lasts.





## COMPREHENSIVE PROPERTY MANAGEMENT SOLUTIONS

Tor Properties offers dedicated property management services. Designed to make your life easier, our expert services maintain your assets and optimize investments for maximum value. Overseeing all aspects of property care, at our residential properties, your investment is in safe and capable hands with Tor, providing peace of mind for a hassle-free ownership experience.





St Raphael Marina

Dasoudi Beach

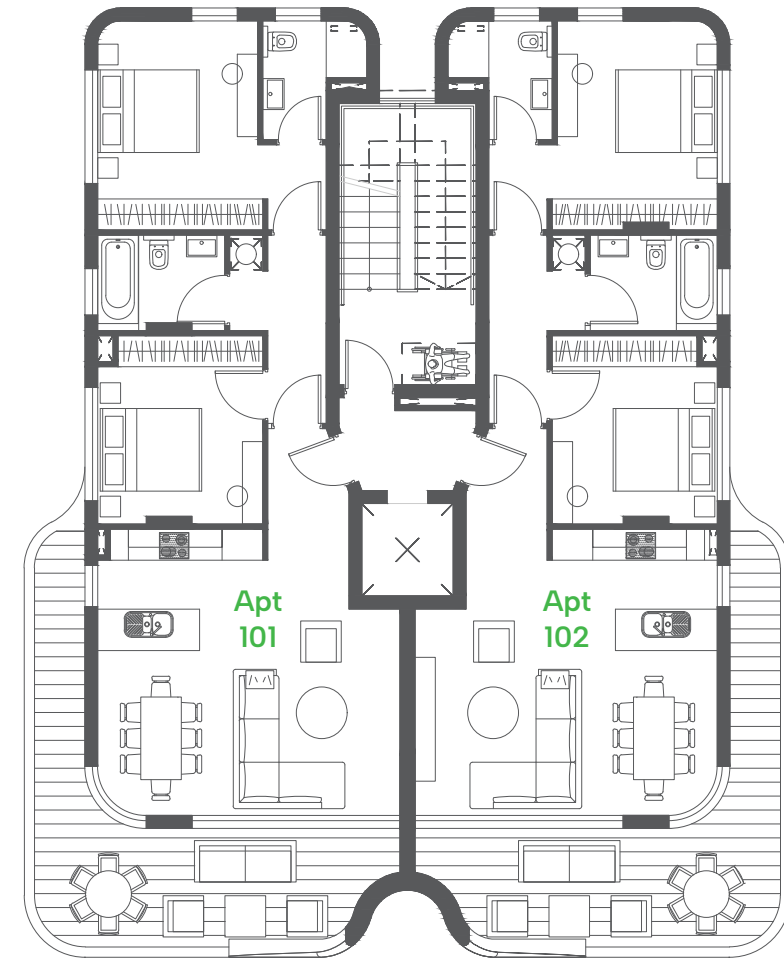
Coastal Road

Alphamega Supermarket

Municipal Park

**MIDORI**  
Residences

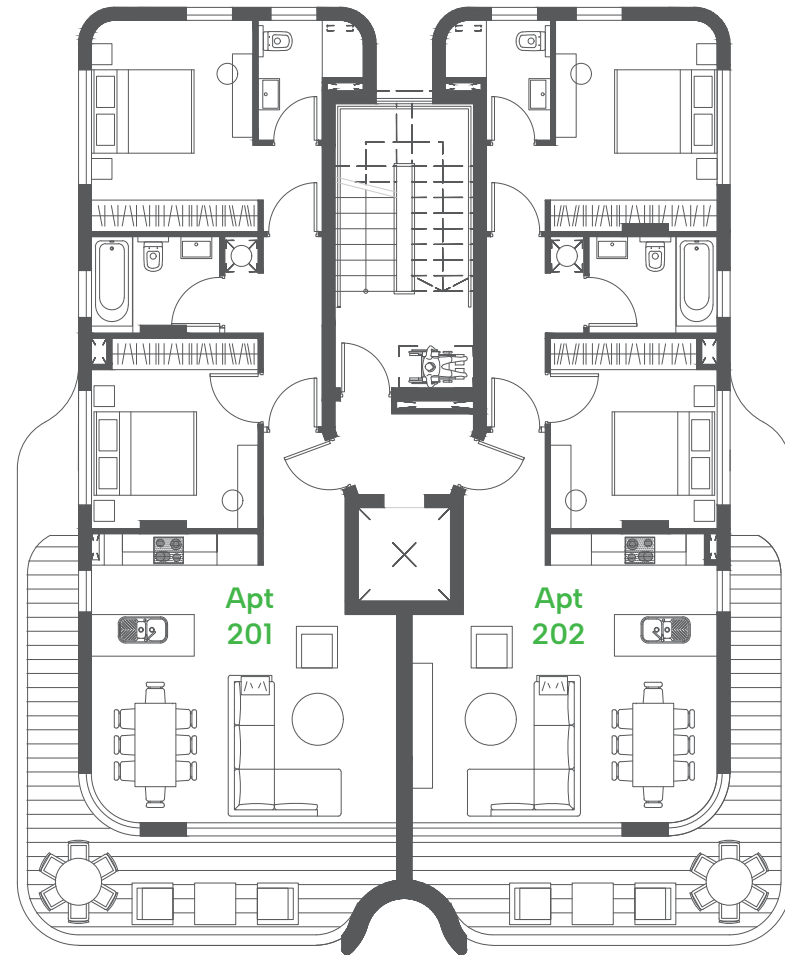




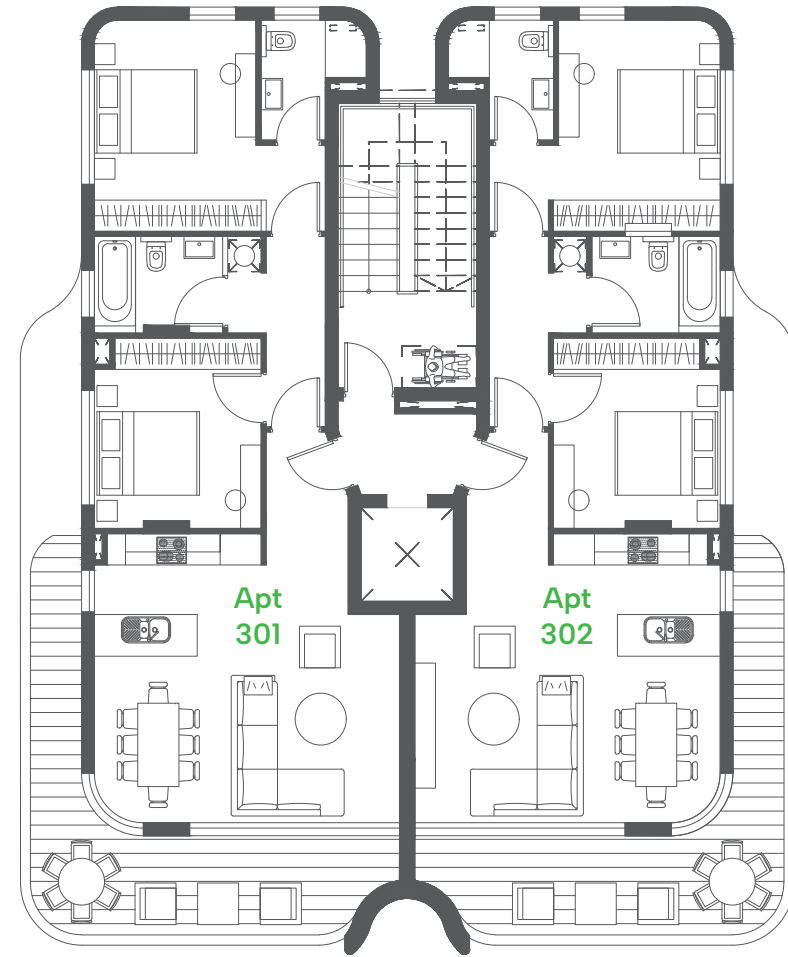
### FLOOR 1

Floor	Apartment No.	Bedroom No.	Bathrooms No.	Internal Covered m2	Covered Veranda m2	Roof Garden m2	Total Areas m2
1st	101	2	2	87	21	-	108
1st	102	2	2	87	21	-	108





FLOOR 2

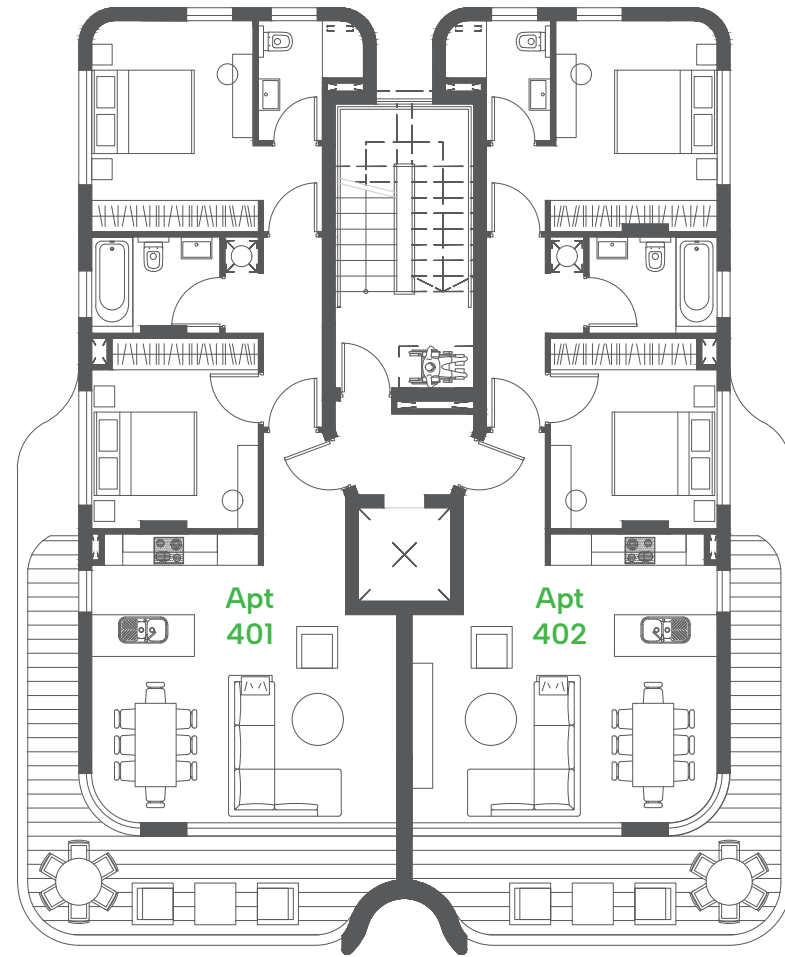


FLOOR 3

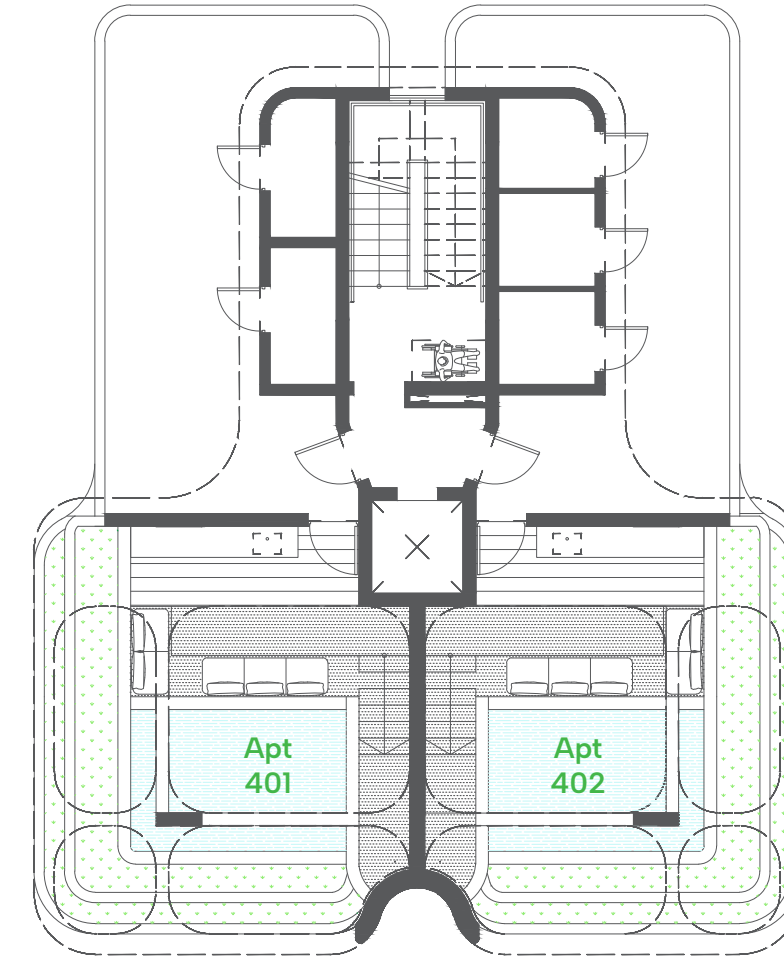
Floor	Apartment No.	Bedroom No.	Bathrooms No.	Internal Covered m2	Covered Veranda m2	Roof Garden m2	Total Areas m2
2nd	201	2	2	87	21	-	108
2nd	202	2	2	87	21	-	108

Floor	Apartment No.	Bedroom No.	Bathrooms No.	Internal Covered m2	Covered Veranda m2	Roof Garden m2	Total Areas m2
3rd	301	2	2	87	21	-	108
3rd	302	2	2	87	21	-	108





FLOOR 4



ROOF GARDEN

Floor	Apartment No.	Bedroom No.	Bathrooms No.	Internal Covered m2	Covered Veranda m2	Roof Garden m2	Total Areas m2
4th	401	2	2	87	21	38	146
4th	402	2	2	87	21	38	146

Floor	Apartment No.	Bedroom No.	Bathrooms No.	Internal Covered m2	Covered Veranda m2	Roof Garden m2	Total Areas m2
Roof Garden	401	-	-	-	-	38	38
Roof Garden	402	-	-	-	-	38	38



# TECHNICAL SPECIFICATIONS

## GENERAL STRUCTURE

### Foundations & Superstructure

Reinforced concrete in accordance with the anti-seismic standards and regulations

### Internal Walls

100mm brickwork

### External Walls

250mm brickwork covered with thermal insulation system.

### Insulation and Waterproofing

Thermal Insulation (80-100mm) in all walls and exposed roofs and polyurethane waterproofing system in verandas and roof

## FINISHES

### Living – Dining Room

Porcelain tiles

### Bedrooms

Engineering parquet floor, Italian made wardrobes.

### Kitchen

Italian cabinets and synthetic stone worktops.

### Verandas

Anti-slip Porcelain tiles

### Front Doors / Internal Doors

Bespoke, according to fire and safety regulations.

### External Walls

Sto-lit finish or similar  
3 coats of waterproof paint  
Aluminium shading screens

### Bathrooms / W.C.

Porcelain tiles for floors and walls  
Sanitary ware and mixers from European manufacturers

### Windows / External Doors

Thermal, powder-coated aluminum Double glazed.

### Internal Walls

2 coats of plaster / Spatula  
3 coats of emulsion paint

### Roof garden for selected top floor apartments Common landscaped area

## MECHANICAL SERVICES

### Plumbing:

- Pressured water system

### Heating:

- Convector units for all apartments
- Production of hot water for domestic use

### Air conditioning:

- Split unit system / wall mounted for bedroom areas
- Ceiling concealed indoor units for penthouse living areas

### Lift:

- 1 Machine Roomless Lift (MRL)

## ELECTRICAL SERVICES

### Lighting:

- Provision for master lighting control
- LED lights in all living areas
- Façade Lighting
- Landscape Lighting
- Occupancy sensors for parking areas

Electric shutters in bedrooms

Traffic barrier

Wi-Fi network

TV System/ Central IF-RF TV Distribution System

Intruder alarm/ Fire detection system

CCTV system provision

Video-entrance system











## ENQUIRE TODAY

Phone Number: 25 355 565

Email: [info@tor.cy](mailto:info@tor.cy)

Website: [www.tor.cy](http://www.tor.cy)

*Please note that the images and floor plans depicted in this brochure are intended for illustrative purposes only. They may not accurately reflect the final design or specifications of the property. We reserve the right to alter specifications and layouts as required during the development phase. All information is subject to change without notice, with updates provided to buyers as they happen.*